



RV Dump opening March 22, 2021

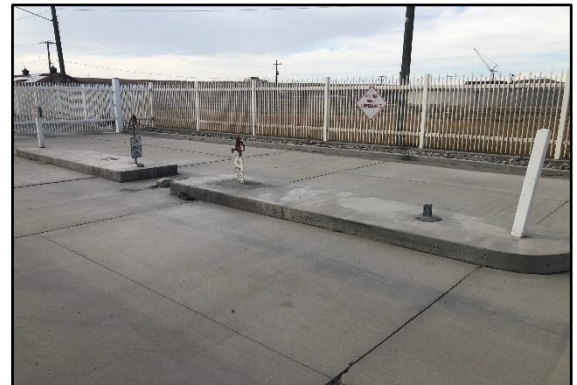


Monday – Thursday, 7:30 am to 5:00 pm

MWD has operated an RV dump at the WWTP for over 20 years. It is a two-lane RV dump station that includes two-yard hydrants for wash water with two discharge points that can accommodate up to a 4-inch diameter sanitary sewer connection/hose from an RV. The discharge flows directly to the influent lift station/headworks at the head of the WWTP.

2021 OPERATION SEASON

The RV Dump will be available to the public free of charge Monday thru Thursday from 7:30 am to 5:00 pm (closed holidays), starting March 22nd and will close for winter in mid-October. Address: 7750 W. 2100 S.



Magna WWTP RV Dump

CONSTRUCTION ON 2100 SOUTH

Through the summer of 2021 there will be several construction projects along 2100 South between 8000 West and 7200 West. Starting as early as April there will be traffic control measures including lane shifting and road closures due to gas and water installation for a new development. Additionally, MWD will begin (anticipated June 2021) construction of a new 30-inch sewer main in 2100 South to accommodate existing users and future growth throughout the District. It is expected that there will be limited access to the RV Dump from April to August and no access for up to two weeks in June due to the planned work and required traffic control measures. Check the District website for construction updates and for most current information at

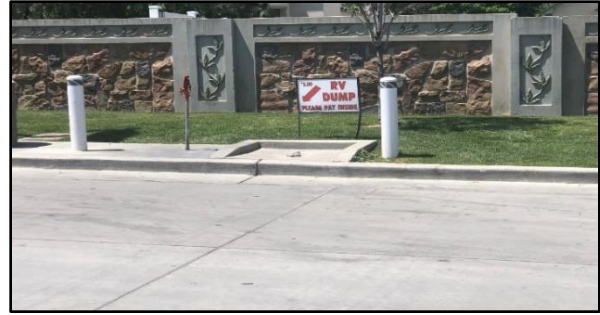
<https://www.magnawater.com/current-projects>.



Holiday Oil 7200 W.

OTHER RV DUMP OPTIONS IN MAGNA

The District has seen a lot of growth in the surrounding area of the RV Dump. That growth has had a large effect on the traffic using 2100 South. The increased traffic includes large dump trucks and concrete trucks, when you combine that with RV's waiting on each side of the road on very slim shoulders, it becomes a very dangerous situation and serious accidents waiting to happen.



Holiday Oil 8400 W.

When the dump was first opened, there were no other RV dump stations in Magna, however there are now two Holiday Oil Gas Stations and a Maverik that is anticipated to open in 2021. All are more convenient and safer locations for an RV dump station since they allow for more dilution of the waste and they are located off a main roadway. The Holiday locations charge a small dump fee of \$5.00 but provide 24-hour security monitoring which discourages illicit discharges. Maverik has indicated that the forthcoming dump station on 8000 West will be free of charge, like their other locations.

